

KOMATSU

Hydraulic Breakers H-Series

ATTACHMENTS



HYDRAULIC BREAKERS

H-SERIES

Operating weight: 804.7-7,189.3 lbs.
(365-3,261 kg)

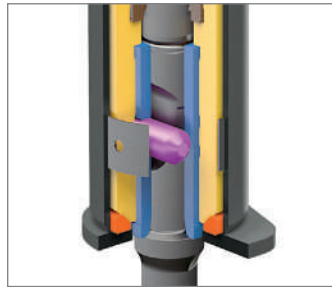
Machine class: 4-60 metric tons
Komatsu carriers: PC78-PC490

H-Series Hydraulic Breakers

Komatsu hydraulic breakers provide outstanding impact energy in a variety of rock and concrete demolition applications: you can count on exceptional performance and efficiency, whether you're scaling a tunnel, running a pedestal-boom on a quarry, or tearing out reinforced concrete abutments.

H-Series

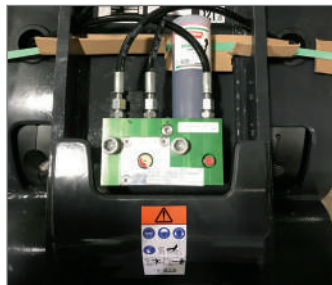
- Accumulator-type
- Compact range: light, simple and built for reliability
- Heavy range: powerful, two-speed



Compact range breakers
One-piece floating bushing



Swivel hose coupling
Extends hose life



Automatic greasing system
Standard on all JMHB130H and all larger models



Hydraulic accumulator
Constant power over time

An ace up their sleeve

Eight new models join the Komatsu hydraulic breaker range. Based on accumulator-type technology, these breakers are designed to deliver consistent impact power over a wide range of applications. Innovative features and thoughtful design help to improve production and can lower cost of operation.

Compact excavator range

Two breakers, from 143.3 to 2,626 pounds (65 to 1,190 kg), cover the utility and mini excavator segment. These breakers are designed with a compact, light body, which can improve machine stability and operator visibility. The inside is simple and reliable: no tie rods, but with high-quality components, automatic pressure regulation, high back pressure tolerance and blank firing protection.

Large excavator

Dual mode breakers adapt to various rock types with two working positions to provide the right frequency and energy per blow. They automatically start in high power, low frequency and shift to low power, high frequency as material starts to fracture. This two-speed feature provides advanced anti-blank fire protection that helps extend hammer life by reducing stress on tie rods, tool retainers and other components.

H-SERIES

Models: 8

Operating weight: 804.7-7,189.3 lbs.
(365-3,261 kg)

Machine class: 4-60 metric tons

Komatsu carriers: PC78 to PC490

Oil flow: 14.5-84.5 gpm
(55-320 L/min)

Tool diameter: 3-7 in
(76-175 mm)

Model Listing

H-Series Hydraulic Breakers

Model		JMHB70H	JMHB80H	JMHB100H	JMHB130H	JMHB170H	JMHB220H	JMHB360H	JMHB460H
Operating weight (with bracket cap and tool)	lbs. (kg)	804.7 (365)	981.1 (445)	1,097.9 (498)	1,609.4 (730)	2,469.2 (1,120)	4,153.5 (1,884)	5,668.1 (2,571)	7,189.3 (3,261)
Oil flow (min-max)	gpm (L/min)	14.5 - 26.4 (55 - 100)	18.5 - 31.7 (70 - 120)	19.8 - 33 (75 - 125)	21.1 - 37 (80 - 140)	26.4 - 39.6 (100 - 150)	37 - 58.1 (140 - 220)	46.2 - 66 (175 - 250)	66 - 84.5 (250 - 320)
Operating pressure	PSI (MPa)	1,740 (12)	1,740 (12)	1,886 (13)	2,030.5 (14)	1,740 (12)	2,393 (16.5)	2,248.1 (15.5)	2,538.2 (17.5)
Impact rate	bpm	700 - 1,540	700 - 1,440	600 - 1,137	420 - 870	400 - 800	320 - 720	320 - 560	350 - 700
Speeds		1	1	1	1	1	2	2	2
Automatic greasing		-	-	Optional	Standard	Standard	Standard	Standard	Standard
Tool diameter	in (mm)	3 (76)	3.3 (84)	3.7 (94)	4.2 (106)	4.7 (118)	5.5 (140)	6.3 (160)	7 (175)
Max. back pressure	PSI (MPa)	290 (2)	290 (2)	290 (2)	218 (1.5)	145 (1)	363 (2.5)	363 (2.5)	218 (1.5)
Carrier size	metric ton	4 - 10	5 - 12	7 - 14	8 - 18	15 - 25	20 - 35	27 - 40	35 - 60
Komatsu carriers available in U.S. market		PC78US	PC88MR	PC130 PC138USLC	PC130 PC138USLC	PC160LC PC170LC PC200	PC210LC PC220LC PC228USLC PC238USLC PC240LC PC270LC PC290LC	PC360LC PC390LC	PC490LC

Matching Tables

Carrier	H-Series		
	in (mm)	lbs. (kg)	(Model)
PC78US-8/10	3 (76)	804.7 (365)	JMHB70H
PC88MR-8/10	3.3 (84)	981.1 (445)	JMHB80H
PC130-11	4.2 (106)	1,609.4 (730)	JMHB130H
PC138USLC-11	4.2 (106)	1,609.4 (730)	JMHB130H
PC160LC-8	4.7 (118)	2,469.2 (1,120)	JMHB170H
PC170LC-10/11	4.7 (118)	2,469.2 (1,120)	JMHB170H
PC200-8/8MO	4.7 (118)	2,469.2 (1,120)	JMHB170H
PC210LC-10/11	5.5 (140)	4,153.5 (1,884)	JMHB220H
PC220LC-8/8MO	5.5 (140)	4,153.5 (1,884)	JMHB220H
PC228USLC-8/10/11	5.5 (140)	4,153.5 (1,884)	JMHB220H
PC238USLC-11	5.5 (140)	4,153.5 (1,884)	JMHB220H
PC240LC-10/11	5.5 (140)	4,153.5 (1,884)	JMHB220H
PC270LC-8	5.5 (140)	4,153.5 (1,884)	JMHB220H
PC290LC-10/11	5.5 (140)	4,153.5 (1,884)	JMHB220H
PC360LC-10/11	6.3 (160)	5,668.10 (2,571)	JMHB360H
PC390LC-10/11	6.3 (160)	5,668.10 (2,571)	JMHB360H
PC490LC-11	7 (175)	7,189.3 (3,261)	JMHB460H





Select the right tool for the job

Using the correct tool is the first step in obtaining maximum life and performance from your breaker. It can also decrease overall running costs and increase productivity.

Pyramid

Application: secondary breaking, demolition, mass excavation
Material: low and medium hardness, homogeneous structure



Blunt

Application: secondary breaking
Material: high hardness, abrasive



Chisel

Application: trenching, mass excavation
Material: low and medium hardness, non-homogeneous structure, abrasive



Moil point

Application: secondary breaking, demolition, mass excavation
Material: low and medium hardness, non-homogeneous structure



Copyrights: © 2021 Komatsu Ltd. or one of its subsidiaries. All rights reserved. Printed in USA. EN-Breakers-H-SP01-0421-V1



Note: All comparisons and claims of improved performance made herein are made with respect to the prior Komatsu model unless otherwise specifically stated.

www.komatsuamerica.com

Product designs, specifications and/or data in this document are provided for informational purposes only and are not warranties of any kind. Product designs and/or specifications may be changed at any time without notice. The only warranties that apply to sales of products and services are Komatsu's standard written warranties, which will be furnished upon request. Komatsu America Corp. is an authorized licensee of Komatsu Ltd. Materials and specifications are subject to change without notice. **KOMATSU**, Komatsu Care® and KOMTRAX® are registered trademarks of Komatsu Ltd. Komatsu and other trademarks and service marks used herein are the property of Komatsu Ltd. or its subsidiaries, or the respective owners or licensees.