



V-series, H-series, G-series

Hydraulic breakers



V-series

Operating weight: 3,197-7,562 lbs.
(1,450-3,430 kg)

Machine class: 18-50 metric tons

Komatsu carriers: PC210-PC490

H-series

Operating weight: 804.7-7,189.3 lbs.
(365-3,261 kg)

Machine class: 4-60 metric tons

Komatsu carriers: PC78-PC490

G-series

Operating weight: 904-7,936.6 lbs.
(410-3,600 kg)

Machine class: 5.5-50 metric tons

Komatsu carriers: PC78-PC490

You can rely on long-lasting performance no matter what conditions you're handling with hydraulic breakers designed for dependability, efficiency and ease of maintenance. The V-series and H-series include many standard features, such as automatic greasing, advanced blank firing protection, swivel hose couplings and heavy-duty housing.

V-series

- 100% hydraulic fired
- Fully automatic variable speed
- A high production ratio in any application

H-series

- 100% hydraulic fired
- Accumulator-type
- Compact range: light, simple and built for reliability
- Heavy range: powerful, two-speed

G-series

- Nitrogen-type
- Straightforward, powerful
- Outstanding reliability



V-series

Operating weight: 3,197-7,562 lbs.
(1,450-3,430 kg)

Machine class: 18-50 metric tons

Komatsu carriers: PC210-PC490

H-series

Operating weight: 804.7-7,189.3 lbs.
(365-3,261 kg)

Machine class: 4-60 metric tons

Komatsu carriers: PC78-PC490

G-series

Operating weight: 904-7,936.6 lbs.
(410-3,600 kg)

Machine class: 5.5-50 metric tons

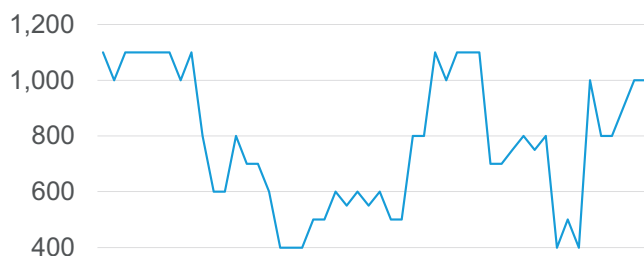
Komatsu carriers: PC78-PC490

V-series hydraulic breakers



High productivity and low cost per ton

Maximize performance on the job site with breakers that fully modulate their impact force and frequency to match the application's requirements, with minimal wasted energy and therefore a higher operating efficiency. An innovative energy recovery valve further improves this efficiency. As with the H-series, many features, such as automatic greasing, advanced blank firing protection, swivel hose couplings and heavy-duty housing, are standard.



Nearly 300% energy variation in one second

Fully variable technology

Depending on the application's hardness, V-series breakers automatically select the optimal piston stroke length and speed. By adjusting to either hard material, with long and powerful strokes, or to softer material, with shorter, faster strokes, high production output is consistently achieved, with little wasted impact energy.

V-series

Models: 3

Operating weight: 3,197-7,562 lbs. (1,450-3,430 kg)

Machine class: 18-50 metric tons

Komatsu carriers: PC210 to PC490

Oil flow: 31.7-84.5 gp (120-320 L/min)

Tool diameter: 4.8-6.7 in (122-170 mm)

H-series hydraulic breakers

Exceptional impact energy

Bring outstanding impact energy to your job site with an accumulator-type hydraulic breaker effective in a variety of rock and concrete demolition applications. This fully hydraulic breaker is designed with features to enhance output power and efficiency and prevent overflow.



An ace up their sleeve

Eight models join the Komatsu hydraulic breaker range. Based on accumulator-type technology, these breakers are designed to deliver consistent impact power over a wide range of applications.

Compact excavator range

Three breakers, from 804.7 to 1,097.9 pounds (365 to 498 kg), cover the utility and mini excavator segment. These breakers are designed with a compact, light body, which can improve machine stability and operator visibility. The inside is simple and reliable: no tie rods, but with high-quality components, automatic pressure regulation, high back pressure tolerance and blank firing protection.

Large excavator

Dual-mode breakers adapt to various rock types with two working positions to provide the right frequency and energy per blow. They automatically start in high power, low frequency and shift to low power, high frequency as material starts to fracture. This two-speed feature provides advanced anti-blank fire protection designed to extend hammer life by reducing stress on tie rods, tool retainers and other components.

Automatic greasing system

Standard on all JMHB130H and all larger models.



H-series

Models: 8

Operating weight: 804.7-7,189.3 lbs. (365-3,261 kg)

Machine class: 4-60 metric tons

Komatsu carriers: PC78 to PC490

Oil flow: 14.5-84.5 gpm (55-320 L/min)

Tool diameter: 3-7 in (76-175 mm)

G-series hydraulic breakers

Simple, powerful and designed for reliability

Hydraulic and nitrogen gas breaker that uses non-accumulator technology, resulting in fewer parts and lower maintenance costs. These breakers are easy to service and provide a high level of reliability. Optional automatic lubrication can extend their life even further.



Nitrogen gas cushion
Absorbs piston recoil to reduce vibration for less stress on the machine and operator

Simple control valve
Flow-through design for efficient control while also minimizing hydraulic surge

Durable tie rods
With rubber vibration isolator

50/50 piston-to-chisel weight ratio
With long stroke for greater energy transfer and less recoil

Dual retainer pins
Ensures proper alignment and spreads wear around the tool for longer chisel and bushing life

Special hardened alloy points
For increased durability in a wide range of applications

G-series

Models: 8

Operating weight: 904-7,936.6 lbs. (410-3,600 kg)

Machine class: 5.5-50 metric tons

Komatsu carriers: PC78 to PC490

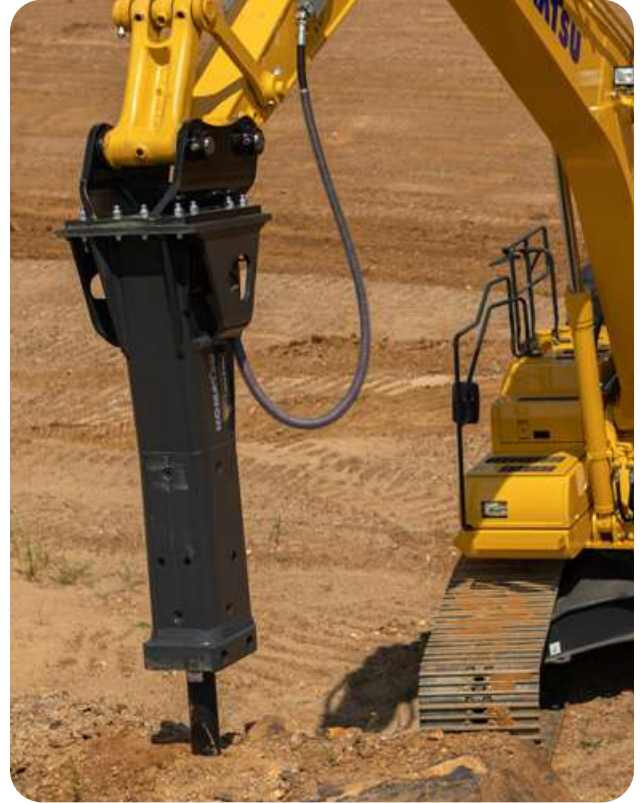
Oil flow: 10.5-79.3 gpm (40-300 L/min)

Tool diameter: 3-6.3 in (75-160 mm)

Model listing

V-series hydraulic breakers

Model		JMHB230V	JMHB370V	JMHB470V
Operating weight	lbs. (kg)	3,196.7 (1,450)	5,615.2 (2,547)	7,561.9 (3,430)
Oil flow (min-max)	gpm (L/min)	31.7-45 (120-170)	46.7-70 (180-265)	63.4-84.5 (240-320)
Operating pressure	PSI (MPa)	1,958 (13.5)	2,393 (16.5)	2,393 (16.5)
Impact rate	bpm	285-1,050	345-1,160	330-1,045
Variable speeds		15	15	15
Automatic greasing		Standard	Standard	Standard
Tool diameter	in (mm)	4.8 (122)	5.9 (150)	6.7 (170)
Max. back pressure	PSI (MPa)	174 (1.2)	116 (0.8)	174 (1.2)
Carrier size	metric ton	18-35	27-47	35-50
Komatsu carriers available in U.S. market		PC210LC PC220LC PC228USLC PC238USLC PC240LC PC270LC PC290LC	PC360LC PC390LC	PC490LC



H-series hydraulic breakers

Model		JMHB70H	JMHB80H	JMHB100H	JMHB130H	JMHB170H	JMHB220H	JMHB360H	JMHB460H
Operating weight (with bracket cap and tool)	lbs. (kg)	804.7 (365)	981.1 (445)	1,097.9 (498)	1,609.4 (730)	2,469.2 (1,120)	4,153.5 (1,884)	5,668.1 (2,571)	7,189.3 (3,261)
Oil flow (min-max)	gpm (L/min)	14.5-26.4 (55-100)	18.5-31.7 (70-120)	19.8-33 (75-125)	21.1-37 (80-140)	26.4-39.6 (100-150)	37-58.1 (140-220)	46.2-66 (175-250)	66-84.5 (250-320)
Operating pressure	PSI (MPa)	1,740 (12)	1,740 (12)	1,886 (13)	2,030.5 (14)	1,740 (12)	2,393 (16.5)	2,248.1 (15.5)	2,538.2 (17.5)
Impact rate	bpm	700-1,540	700-1,440	600-1,137	420-870	400-800	320-720	320-560	350-700
Speeds		1	1	1	1	1	2	2	2
Automatic greasing		-	-	Optional	Standard	Standard	Standard	Standard	Standard
Tool diameter	in (mm)	3 (76)	3.3 (84)	3.7 (94)	4.2 (106)	4.7 (118)	5.5 (140)	6.3 (160)	7 (175)
Max. back pressure	PSI (MPa)	290 (2)	290 (2)	290 (2)	218 (1.5)	145 (1)	363 (2.5)	363 (2.5)	218 (1.5)
Carrier size	metric ton	4-10	5-12	7-14	8-18	15-25	20-35	27-40	35-60
Komatsu carriers available in U.S. market		PC78US	PC88MR	PC130 PC138USLC	PC130 PC138USLC	PC160LC PC170LC PC200	PC210LC PC220LC PC228USLC PC238USLC PC240LC PC270LC PC290LC	PC360LC PC390LC	PC490LC

G-series hydraulic breakers

Model		JTHB60G	JTHB70G	JTHB120G	JTHB160G	JTHB210G	JTHB290G	JTHB355G	JTHB455G
Operating weight (with bracket cap and tool)	lbs. (kg)	904 (410)	1,256.6 (570)	2,094.4 (950)	2,733.7 (1,240)	4,034.5 (1,830)	4,960.4 (2,250)	6,336 (2,880)	8,470 (3,850)
Oil flow (min-max)	gpm (L/min)	10.5-18.5 (40-70)	10.6-18.5 (40-70)	21.1-31.7 (80-120)	26.4-37 (100-140)	42.3-52.8 (160-200)	42.3-55.5 (160-210)	47.5-60.7 (180-230)	63.4-79.2 (240-300)
Operating pressure	PSI (MPa)	1,450- 2,320 (10-16)	1,450- 2,320 (10-16)	2,030- 2,610 (14-18)	1,740.5- 2,465.6 (12-17)	2,030.5- 2,610.7 (14-18)	2,030.5- 2,610.7 (14-18)	1,885- 2,610 (13-18)	2,030- 2,610 (14-18)
Impact rate	bpm	600-1,050	600-1,050	450-720	430-600	450-630	370-490	350-450	370-470
Tool diameter	in (mm)	3 (75)	3.7 (95)	4.1 (105)	4.5 (115)	5.3 (135)	5.5 (140)	6.1 (155)	7.0 (178)
Max. back pressure	PSI (MPa)	275.6 (1.9)	261.1 (1.8)	275.6 (1.9)	290.1 (2)	275.6 (1.9)	290.1 (2)	290.1 (2)	319.1 (2.2)
Carrier size	metric ton	5.5-8	6-11	8-14	14-20	18-25	20-30	27-40	38-53
Komatsu carriers available in U.S. market		PC78US PC88MR	PC78US PC88MR	PC130 PC138USLC	PC160LC PC170LC	PC200 PC210LC PC220LC PC228USLC PC238USLC PC240LC	PC270LC PC290LC	PC360LC PC390LC	PC490LC



Matching tables

Carrier	V-series			H-series			G-series		
	Tool diameter in (mm)	lbs. (kg)	(Model)	Tool diameter in (mm)	lbs. (kg)	(Model)	Tool diameter in (mm)	lbs. (kg)	(Model)
PC78US-8/10/11				3 (76)	804.7 (365)	JMHB70H	3 (75)	904 (410)	JTHB60G
PC88MR-8/10/11				3.3 (84)	981.1 (445)	JMHB80H	3 (75)	904 (410)	JTHB60G
PC78US-8/10/11				4.2 (106)	1,609.4 (730)	JMHB130H	3.7 (95)	1,256.6 (570)	JTHB70G
PC88MR-8/10/11				4.2 (106)	1,609.4 (730)	JMHB130H	3.7 (95)	1,256.6 (570)	JTHB70G
PC130-11				4.7 (118)	2,469.2 (1,120)	JMHB170H	4.1 (105)	2,094.4 (950)	JTHB120G
PC138USLC-11				4.7 (118)	2,469.2 (1,120)	JMHB170H	4.1 (105)	2,094.4 (950)	JTHB120G
PC160LC-8				4.7 (118)	2,469.2 (1,120)	JMHB170H	4.5 (115)	2,733.7 (1,240)	JTHB160G
PC170LC-10/11				5.5 (140)	4,153.5 (1,884)	JMHB220H	4.5 (115)	2,733.7 (1,240)	JTHB160G
PC200-8/8M0				5.5 (140)	4,153.5 (1,884)	JMHB220H	5.3 (135)	4,034.5 (1,830)	JTHB210G
PC210LC-10/11	4.8 (122)	3,196.7 (1,450)	JMHB230V	5.5 (140)	4,153.5 (1,884)	JMHB220H	5.3 (135)	4,034.5 (1,830)	JTHB210G
PC220LC-8/8M0	4.8 (122)	3,196.7 (1,450)	JMHB230V	5.5 (140)	4,153.5 (1,884)	JMHB220H	5.3 (135)	4,034.5 (1,830)	JTHB210G
PC228USLC-8/10/11	4.8 (122)	3,196.7 (1,450)	JMHB230V	5.5 (140)	4,153.5 (1,884)	JMHB220H	5.3 (135)	4,034.5 (1,830)	JTHB210G
PC238USLC-11	4.8 (122)	3,196.7 (1,450)	JMHB230V	5.5 (140)	4,153.5 (1,884)	JMHB220H	5.3 (135)	4,034.5 (1,830)	JTHB210G
PC240LC-10/11	4.8 (122)	3,196.7 (1,450)	JMHB230V	5.5 (140)	4,153.5 (1,884)	JMHB220H	5.3 (135)	4,034.5 (1,830)	JTHB210G
PC270LC-8	4.8 (122)	3,196.7 (1,450)	JMHB230V	6.3 (160)	5,668.10 (2,571)	JMHB220H	5.5 (140)	4,960.4 (2,250)	JTHB290G
PC290LC-10/11	4.8 (122)	3,196.7 (1,450)	JMHB230V	6.3 (160)	5,668.10 (2,571)	JMHB220H	5.5 (140)	4,960.4 (2,250)	JTHB290G
PC360LC-10/11	5.9 (150)	5,615.2 (2,547)	JMHB370V	7 (175)	7,189.3 (3,261)	JMHB360H	5.7 (146)	5,952.5 (2,700)	JTHB355G
PC390LC-10/11	5.9 (150)	5,615.2 (2,547)	JMHB370V	5.5 (140)	4,960.4 (2,250)	JMHB460H	5.7 (146)	5,952.5 (2,700)	JTHB355G
PC490LC-11	6.7 (170)	7,561.9 (3,430)	JMHB470V	5.7 (146)	5,952.5 (2,700)	JMHB460H	6.3 (160)	7,936.6 (3,600)	JTHB455G

Select the right tool for the job

Using the correct tool is the first step in obtaining maximum life and performance from your breaker. It can also decrease overall running costs and increase productivity.



Pyramid

Application: secondary breaking, demolition, mass excavation

Material: low and medium hardness, homogeneous structure



Blunt

Application: secondary breaking

Material: high hardness, abrasive



Chisel

Application: trenching, mass excavation

Material: low and medium hardness, non-homogeneous structure, abrasive



Moil point

Application: secondary breaking, demolition, mass excavation

Material: low and medium hardness, non-homogeneous structure

Product designs, specifications and/or data in this document are provided for informational purposes only and are not warranties of any kind. Product designs and/or specifications may be changed at any time without notice. The only warranties that apply to sales of products and services are Komatsu's standard written warranties, which will be furnished upon request.

Komatsu and other trademarks and service marks used herein are the property of Komatsu Ltd., Komatsu America Corp., Komatsu Mining Corp., or one of their affiliates, or the respective owners or licensees.